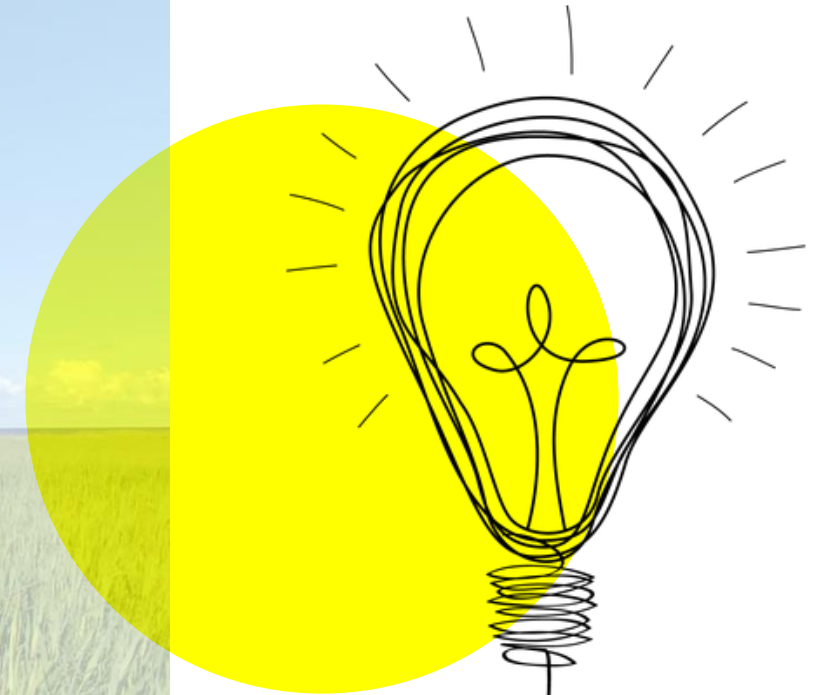


THE STORY of Interreg V-A Latvia- Lithuania Programme 2014-2020

Ieva Cebura
Inga Uvarova
SAFEGE BALTIJA



***WHY, HOW and
WOW!***

MAIN TASKS DURING THE EVALUATION PROCESS



Kick-off meeting on programme evaluation



Survey with the programme partners



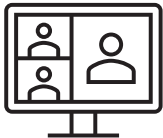
Drafting of the evaluation report



Presentation at the Closing event of the Programme



Document review from eMS



Interviews with the programme partners (26)



Presentation of the evaluation report to the JMC

PRIORITY 1: SUSTAINABLE AND CLEAN ENVIRONMENT THROUGH COOPERATION

SO: 1.1. TO INCREASE NUMBER OF VISITORS THROUGH DEVELOPING NATURAL AND CULTURAL HERITAGE

PROJECTS: **24**
ERDF: **12,6** M EUR

1,13M

Increase of visits to cultural and natural heritage sites



SO: 1.2. TO INCREASE INTEGRATION AND EFFICIENCY OF ENVIRONMENTAL RESOURCE MANAGEMENT

PROJECTS: **14**
ERDF: **7,2** M EUR

88

Organisations supported



SO: 1.3. TO REGENERATE PUBLIC AREAS WITH ENVIRONMENTAL PROBLEMS

PROJECTS: **5**
ERDF: **2,6** M EUR

38 ha

Land surface rehabilitated



Joint tourism routes & other products



Digital & entertaining tourism attractions



Joint international marketing



Joint environmental activities



Developed green infrastructure



Revitalised polluted areas

PRIORITY 1: SUSTAINABLE AND CLEAN ENVIRONMENT THROUGH COOPERATION



Continuity over periods

Efforts and investments span multiple planning periods and yield long-term effects



Seasonality of Covid-19 lock-downs

Nature based (tourism) projects discovered new tourism experiences in own and neighbouring regions



Scale-up & scale-out

New concepts born in projects are transferred to other partnerships, regions, and programmes



“

If there are engaged individuals with a passion, then a lot can be achieved. We need more people with sparkling eyes who stands for great values!

PRIORITY 2: SUPPORT TO LABOUR MOBILITY AND EMPLOYMENT

SO: 2.1. TO CREATE EMPLOYMENT OPPORTUNITIES THROUGH ENTREPRENEURSHIP SUPPORT

PROJECTS: **9**
PARTNERS: **34** ERDF: **3,7** M EUR

SO: 2.2. TO INCREASE JOB OPPORTUNITIES BY IMPROVING MOBILITY AND WORKFORCE SKILLS

PROJECTS: **11**
PARTNERS: **35** ERDF: **13,6** M EUR

27

Business support services improved/created



18

Business support infrastructure objects improved or created



850

Enterprises received non-financial support - improved business models, products, new markets



4454

Persons participated in joint local employment initiatives and training



29

Educational and training infrastructure objects for joint use created or improved



45 km

Reconstructed or upgraded roads




PRIORITY 2: SUPPORT TO LABOUR MOBILITY AND EMPLOYMENT

Built entrepreneurial culture and collaboration among youth and local craftsmen → job opportunities and entrepreneurial mindset within communities

Improved lifelong learning opportunities, vocational education, infrastructure → enhanced cooperation

Improved cross-border road infrastructure → reduced physical barriers to mobility of people and goods

Sparks entrepreneurial vibe and self-sufficiency culture → good preconditions for labour mobility yet limited evidence to date



“
The programme brought young, smart people from all over the world and the city has become alive. A vibrant buzz of people who actively participate in sports, cultural events, go to cafes and shops everywhere.
(LLI-338)

PRIORITY 3: SOCIAL INCLUSION AS PRECONDITION FOR TERRITORIAL DEVELOPMENT

SO: 3.1. TO IMPROVE ACCESSIBILITY AND EFFICIENCY OF SOCIAL SERVICES

PROJECTS: **24**
PARTNERS: **72** ERDF: **9,4** M EUR

41



Social services and infrastructure created or improved

102



Social inclusion measures created or improved

- ✓ Social networks and partnerships between local governments and stakeholders
- ✓ Quality, cost-effectiveness and sustainability of social services improved

SO: 3.2. TO IMPROVE LIVING CONDITIONS IN DEPRIVED COMMUNITIES AND TERRITORIES

PROJECTS: **20**
PARTNERS: **39** ERDF: **3,3** M EUR

89



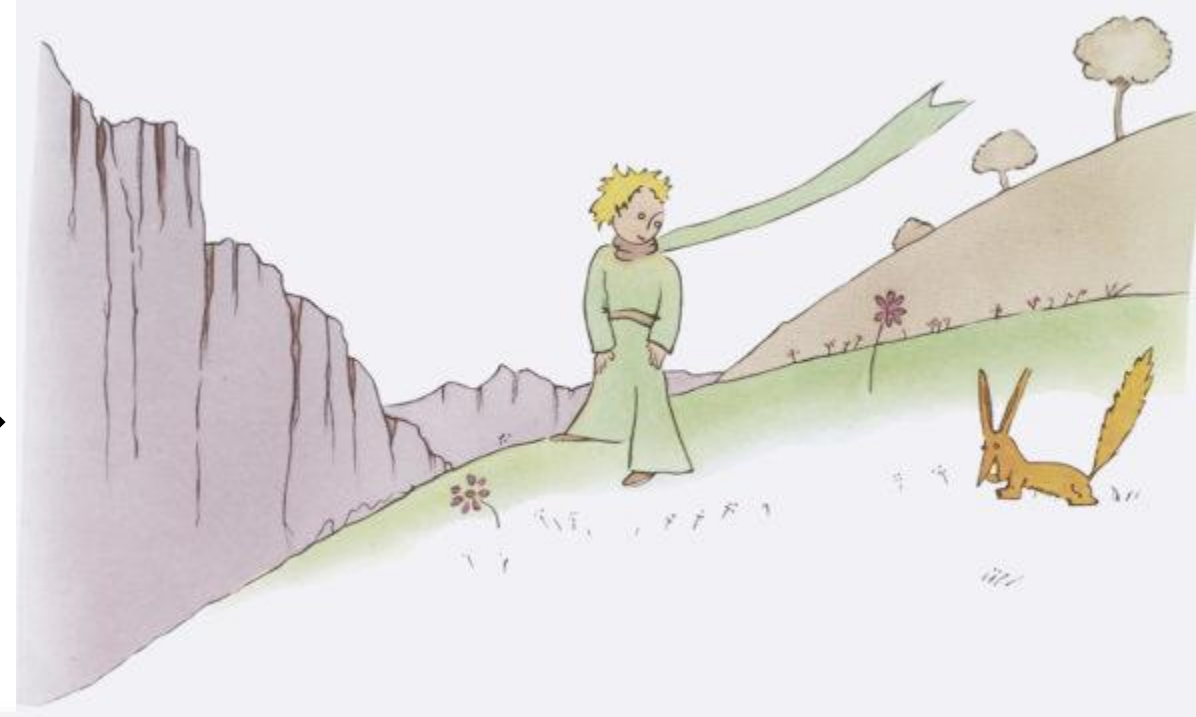
Deprived communities participated in the regeneration activities

- ✓ Public spaces for educational, cultural, healthy lifestyle and sports activities improved
- ✓ Networks and various events focused on education, culture, healthy lifestyle and other fields
- ✓ More accessible services created, which are adapted to the needs of various social groups

PRIORITY 3: SOCIAL INCLUSION AS PRECONDITION FOR TERRITORIAL DEVELOPMENT

Learning from different experiences and systems in Latvia and Lithuania → contributed to increased knowledge and skills

Raising awareness and diminishing stereotypes → professionals and society more open → less obstacles for integration of the target group



“*Teachers and local societies now understand better how to provide opportunities for children with special needs, they see that these children can do much more than expected (LLI-436, SEE ME)*”

PRIORITY 4: IMPROVED QUALITY OF LIVING THROUGH EFFICIENT PUBLIC SERVICES AND ADMINISTRATION

SO: 4.1. IMPROVE THE EFFECTIVENESS OF PUBLIC SERVICES BY ENHANCING COMPETENCE AND COLLABORATION BETWEEN INSTITUTIONS

PROJECTS: 25

ERDF: 9,4 M EUR

PARTNERS: 78

190

Institutions have established cooperation



Digitalisation of services: modernisation of public services: libraries, schools, etc



Security and safety: cooperation among emergency, law enforcement, rescue services



Capacity building: environmental, health, cultural heritage preservation, spatial planning issues



PRIORITY 4: IMPROVED QUALITY OF LIVING THROUGH EFFICIENT PUBLIC SERVICES AND ADMINISTRATION



Exchange of experience → increased capacity within law enforcement institutions, emergency medicine and rescue services → facilitated problem-solving → improved inter-organisational relationships

Improved quality of public services across various sectors, including health, education, library services → more satisfactory user experience → increased demand for services

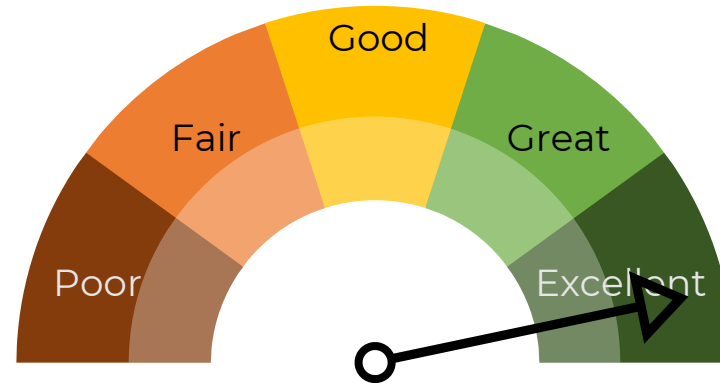
“

Give people advanced technologies! We live in small towns, province, small areas, where people don't even see them. Give people possibility to participate, to make them more digitally advanced!

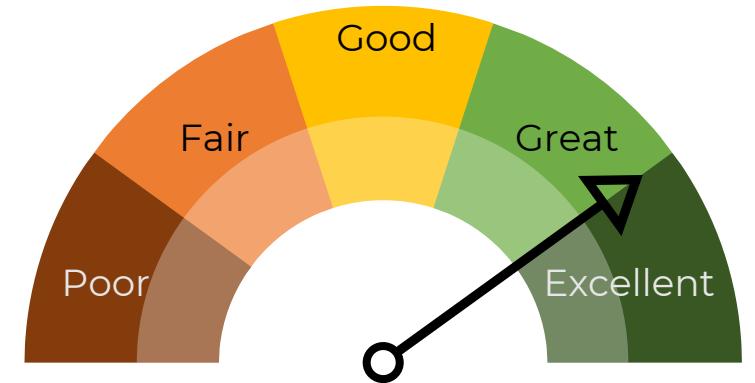
UTILITY OF PROGRAMME SUPPORT

“

It is not an easy job, big funding to manage, big learning curve for ourselves. It gives us courage to try again, we are not stuck, there are new possibilities for cooperation, for development of new services. Development continues.... /LLI-110/



The project responded well to the needs of the target group



The project will have lasting impacts on the target group

CROSS BORDER COOPERATION MATURITY



Enhanced proficiency in collaboration

within large number of partners and bringing effects on the larger geographical scale, particularly in tourism



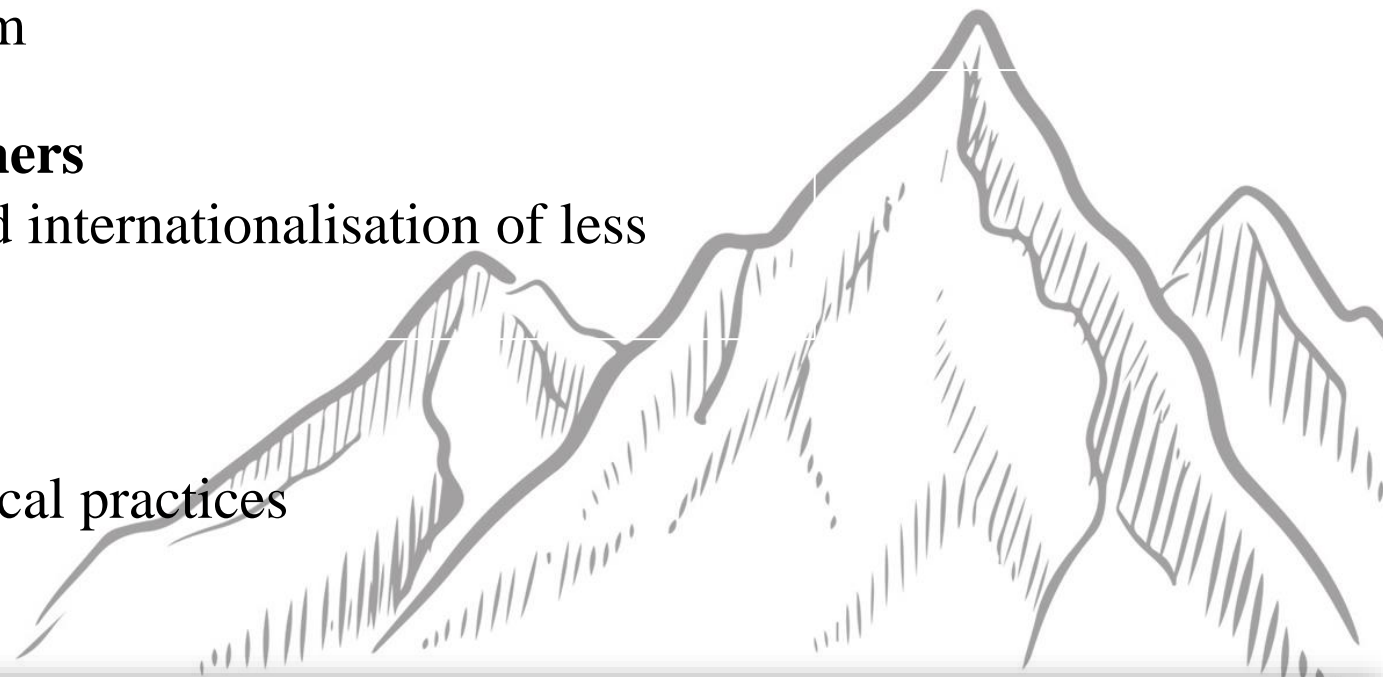
Targeted Approach to Newcomers

increased capacity and facilitated internationalisation of less experienced organisations



Cultural enrichment

the exchange of cultural and historical practices



“

The municipalities of both countries are practically next to each other, within a short and quick reach, and this is the tool that stimulates cooperation in order to be able to do something more ambitious together.